



Addison Fabricators, Inc.

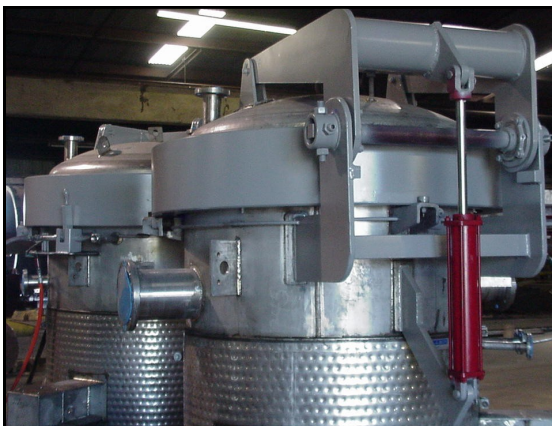
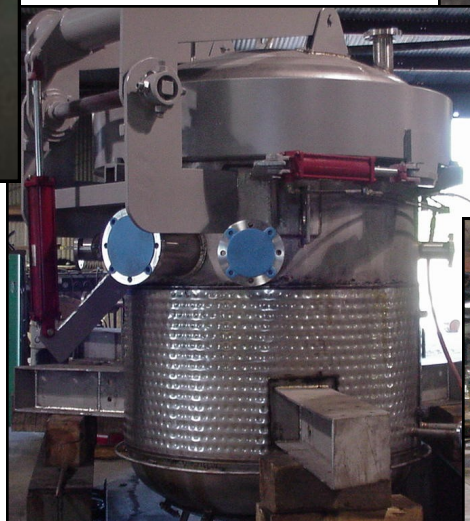
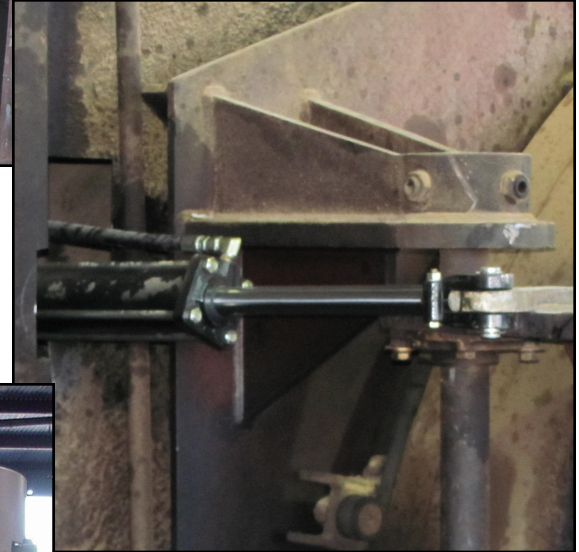
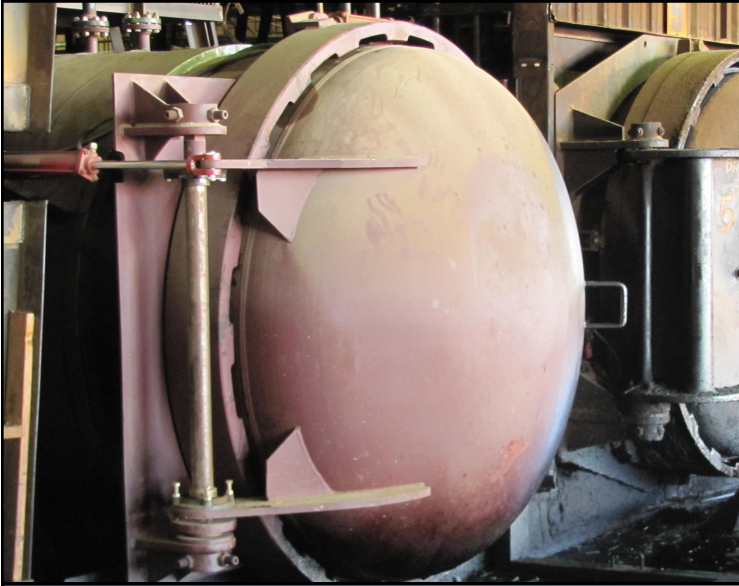
We manufacture ASME Code pressure vessels, tanks, and lumber treating equipment. We have Quick Opening Hinged Closures of various sizes in stock or we can custom fabricate to meet your needs.

Quick Opening Hinged Closures Page #1, Swing Cylinder Page #2, Bridge Rails Page #3 & #4, Overhead Counterweight Door Page #5, Hydraulic Controls Page #6, and Completed Cylinders Page #7.



1/8

Swing Cylinders



Bridge Rails



Bridge Rails



Overhead Counterweight Door



Hydraulic Controls



**Remote control assembly
for locking ring, swing
cylinder, and bridge rails.
Allows the operator to
control all the functions of
the treatment cylinder from
25 feet or more away, as is
necessary under the new
EPA regulations.**

Autoclaves



Autoclaves

We can custom fabricate new treatment cylinders, doors, hydraulic controls, bridge rails, storage tanks, and much more to meet your specific needs. We also have the "R" Code stamp which allows us to service and repair existing vessels in our shop or on site at your location.



To request a quote please contact:

Jud Pheny, President
jpheny@addisonfab.com

or

Barry Hampton, Vice President
bhampton@addisonfab.com 8/8